

## Sure Lock

---

### Table of Contents

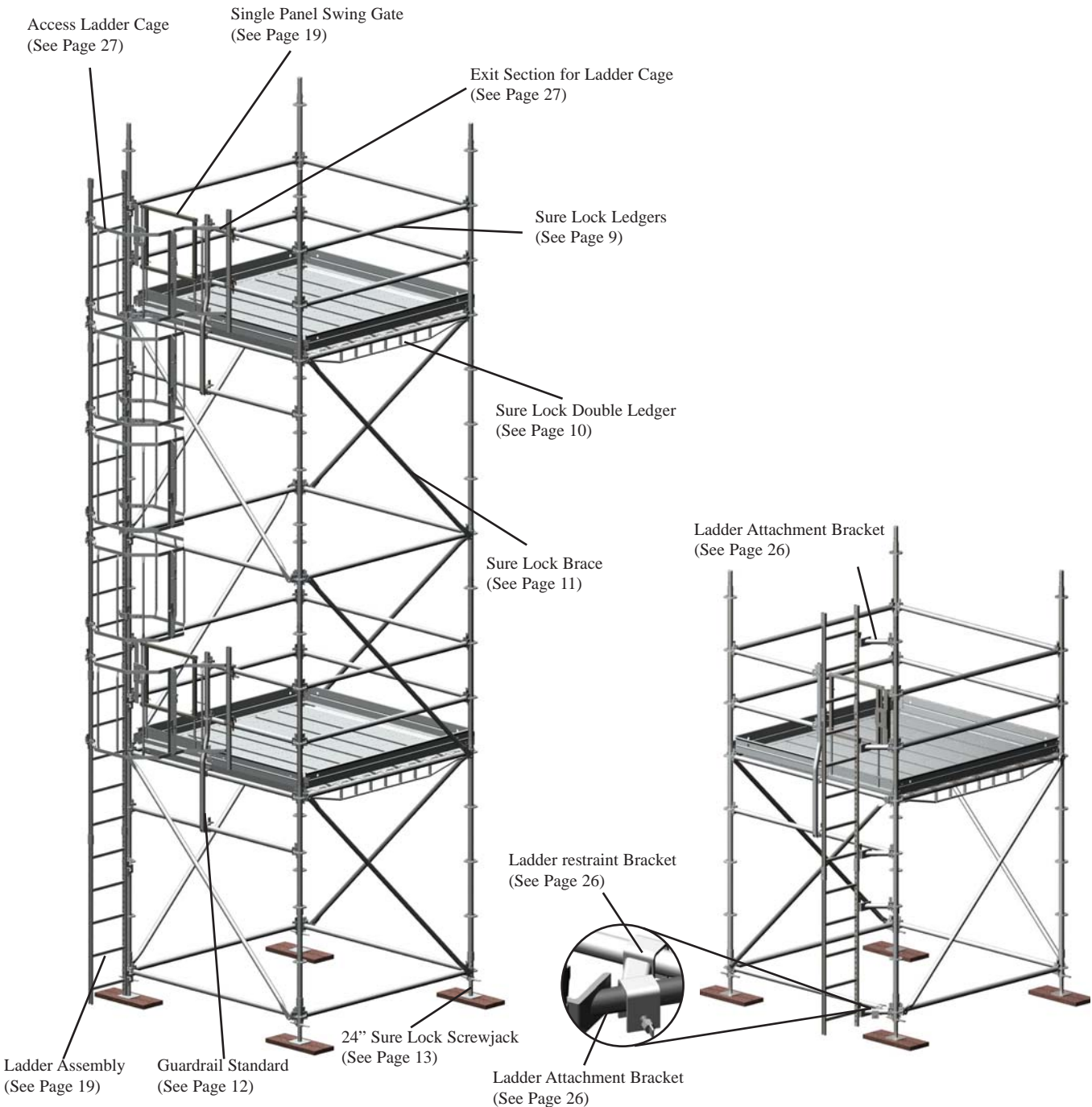
---

<b>Content</b>	<b>Page</b>
<b>SECTION A: ASSEMBLY DETAILS</b>	
Typical Sure Lock Assembly	3
Typical Sure Lock Assembly - Internal Ladder Setup	4
Rolling Scaffold Assembly	5
Stairway Tower Assembly	6
Davit Arm Application	7
Scaffold Bracing Details	8
<b>SECTION B: PARTS CATALOGUE</b>	
<b>Core System</b>	
Sure Lock Ledgers	9
Sure Lock Standards	9
Sure Lock Jacks & Base Plates	13
Sure Lock Planks	15
Sure Lock Side Brackets	17
<b>Ladders</b>	
Sure Lock Ladders & Ladder Brackets	26
<b>Boiler Founding System</b>	28
<b>Sure Lock Parts and Accessories</b>	30



# Sure Lock

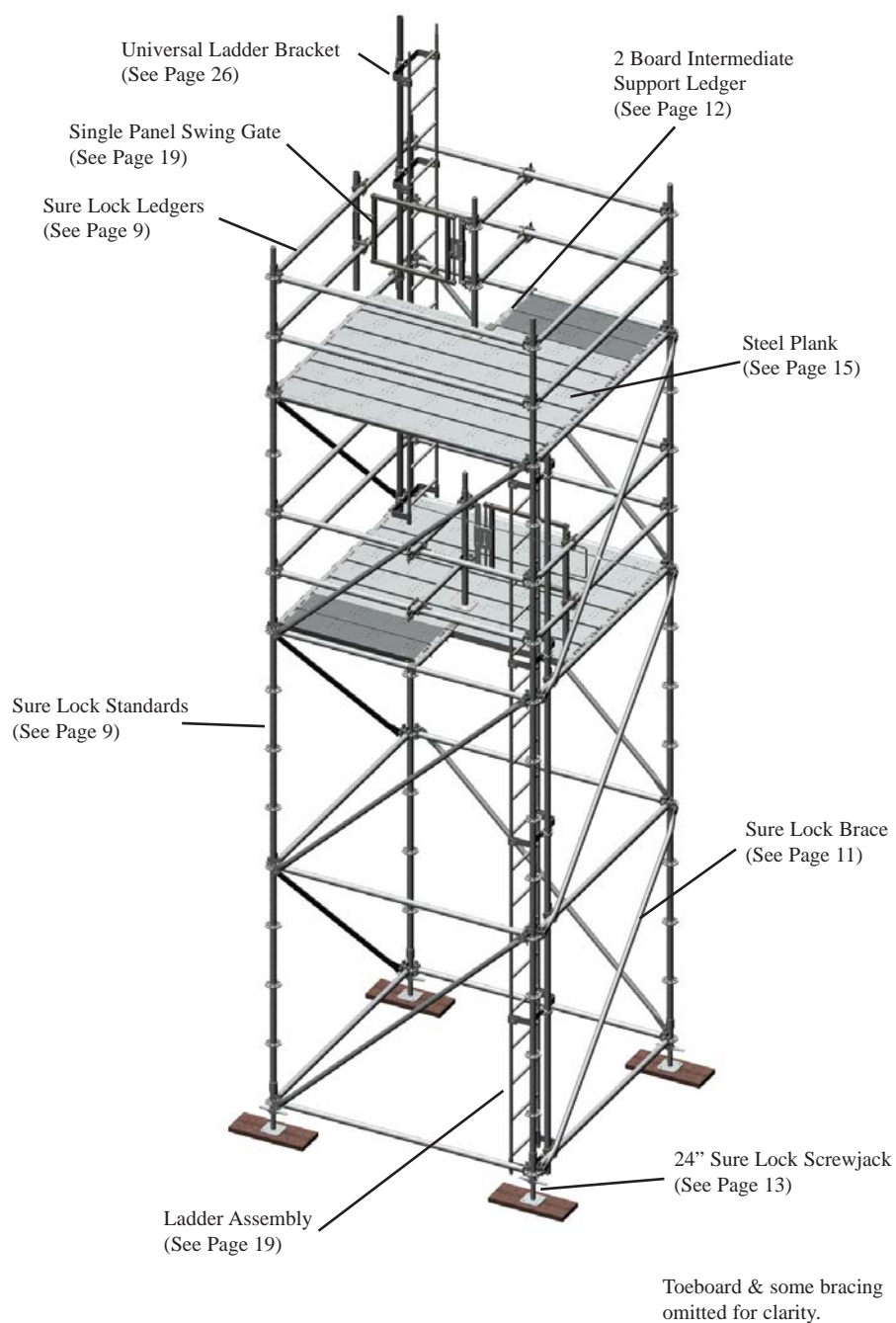
## Typical Sure Lock Assembly



Note: Equipment shown is for illustration purposes only.

## Sure Lock

### Typical Sure Lock Assembly - Internal Ladder Setup

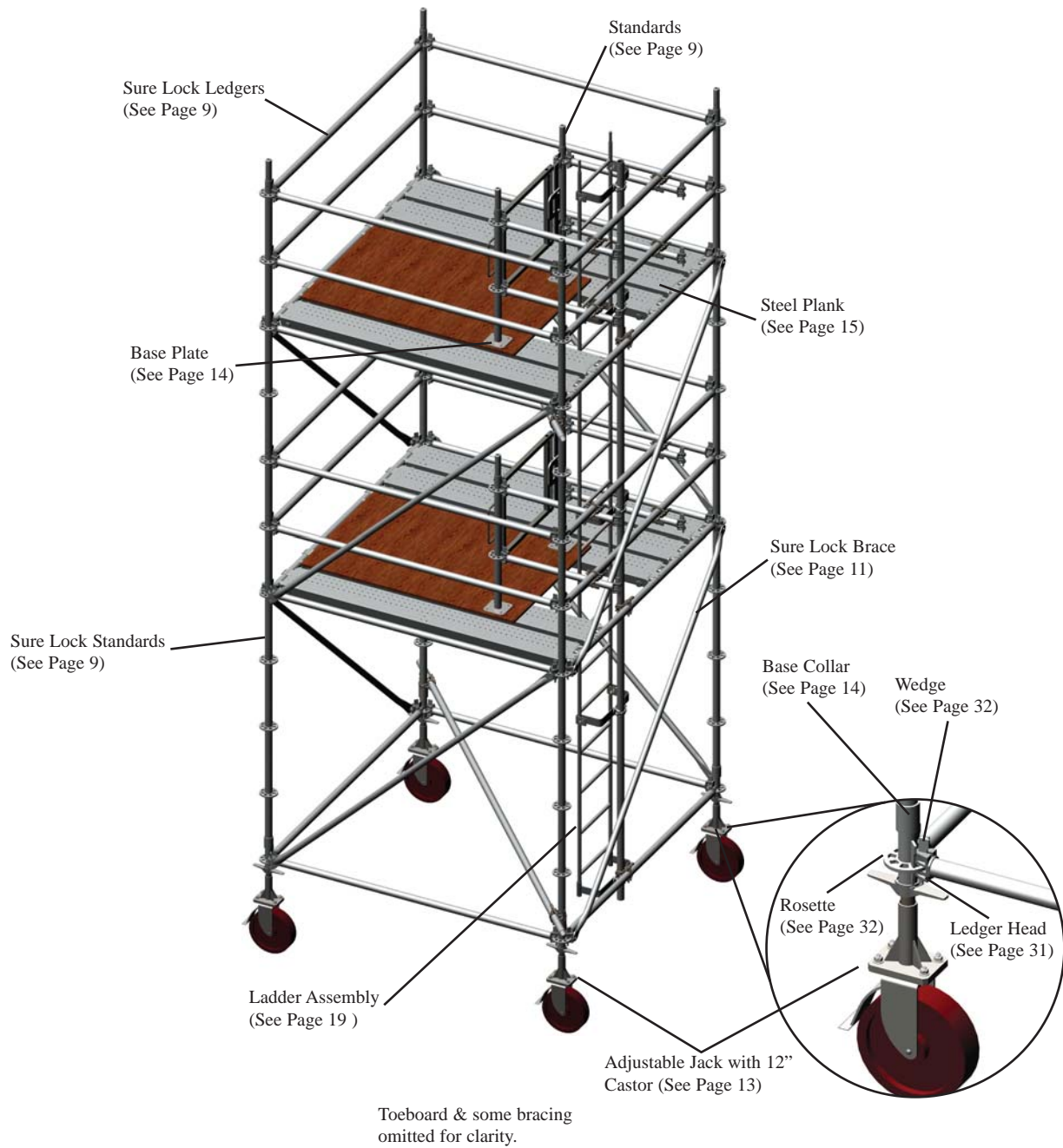


Note: Equipment shown is for illustration purposes only.



## Sure Lock

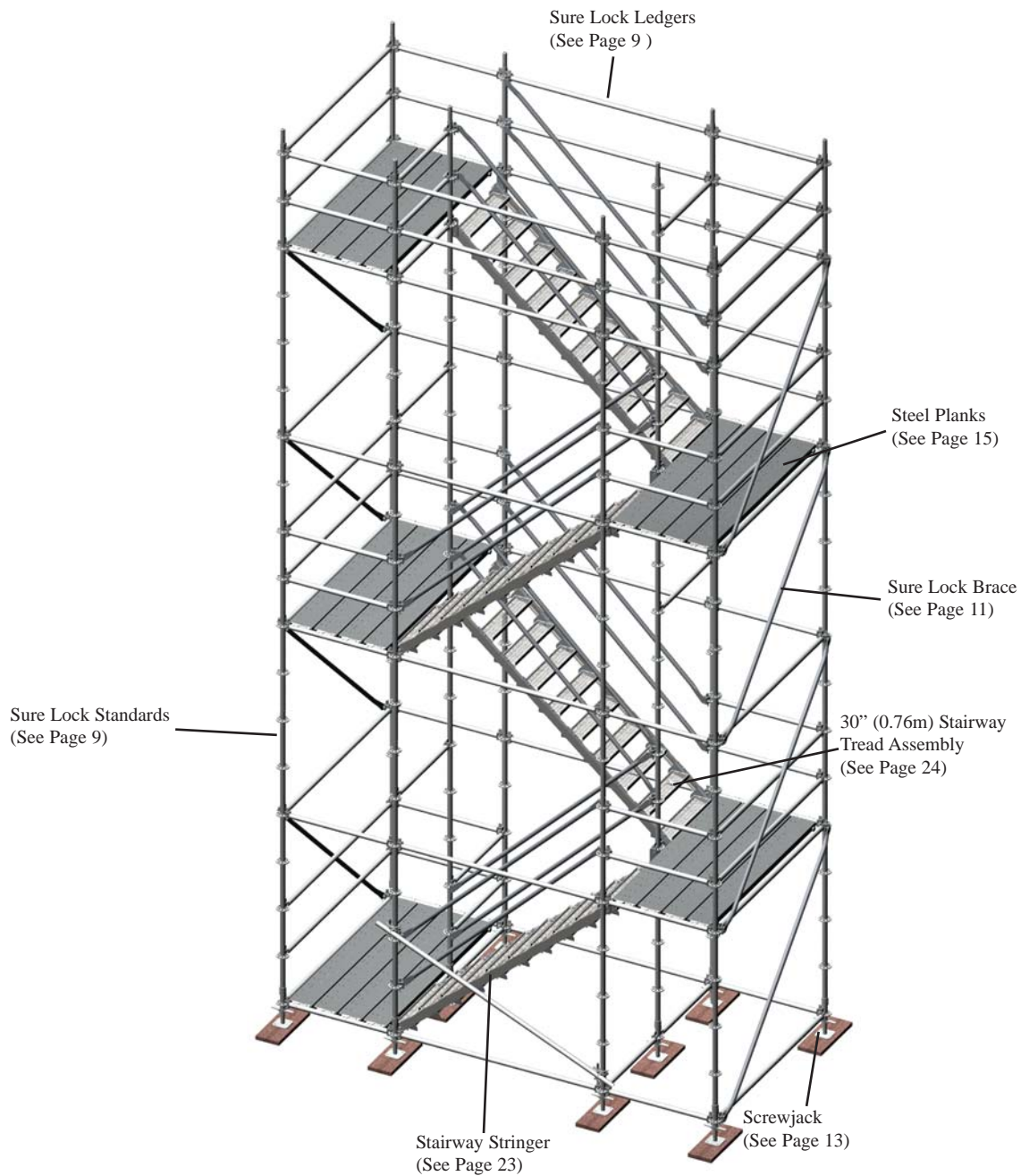
### Rolling Scaffold Assembly



Note: Equipment shown is for illustration purposes only.

## Sure Lock

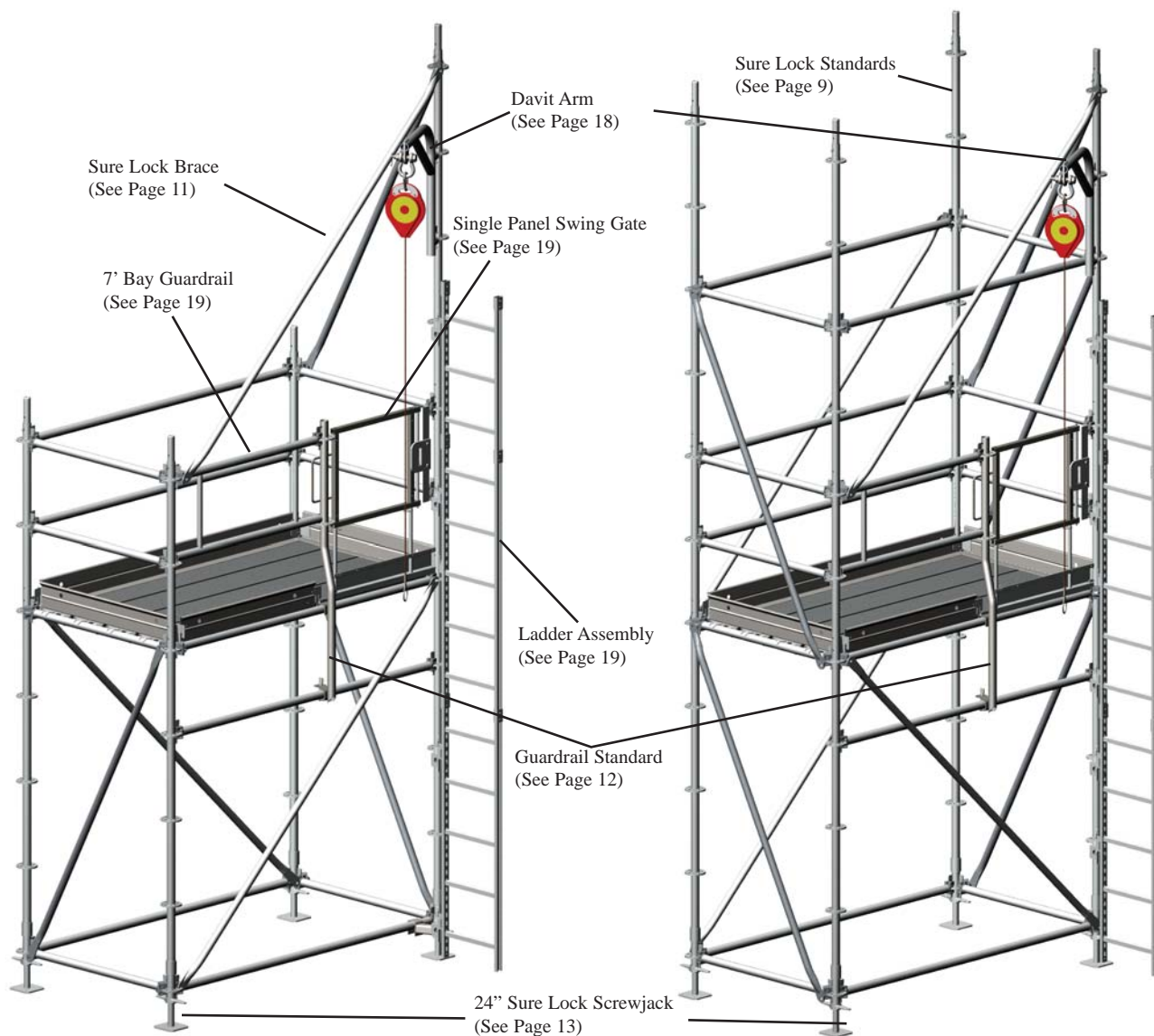
### Stairway Tower Scaffold



Note: Equipment shown is for illustration purposes only.

## Sure Lock

### Davit Arm Application

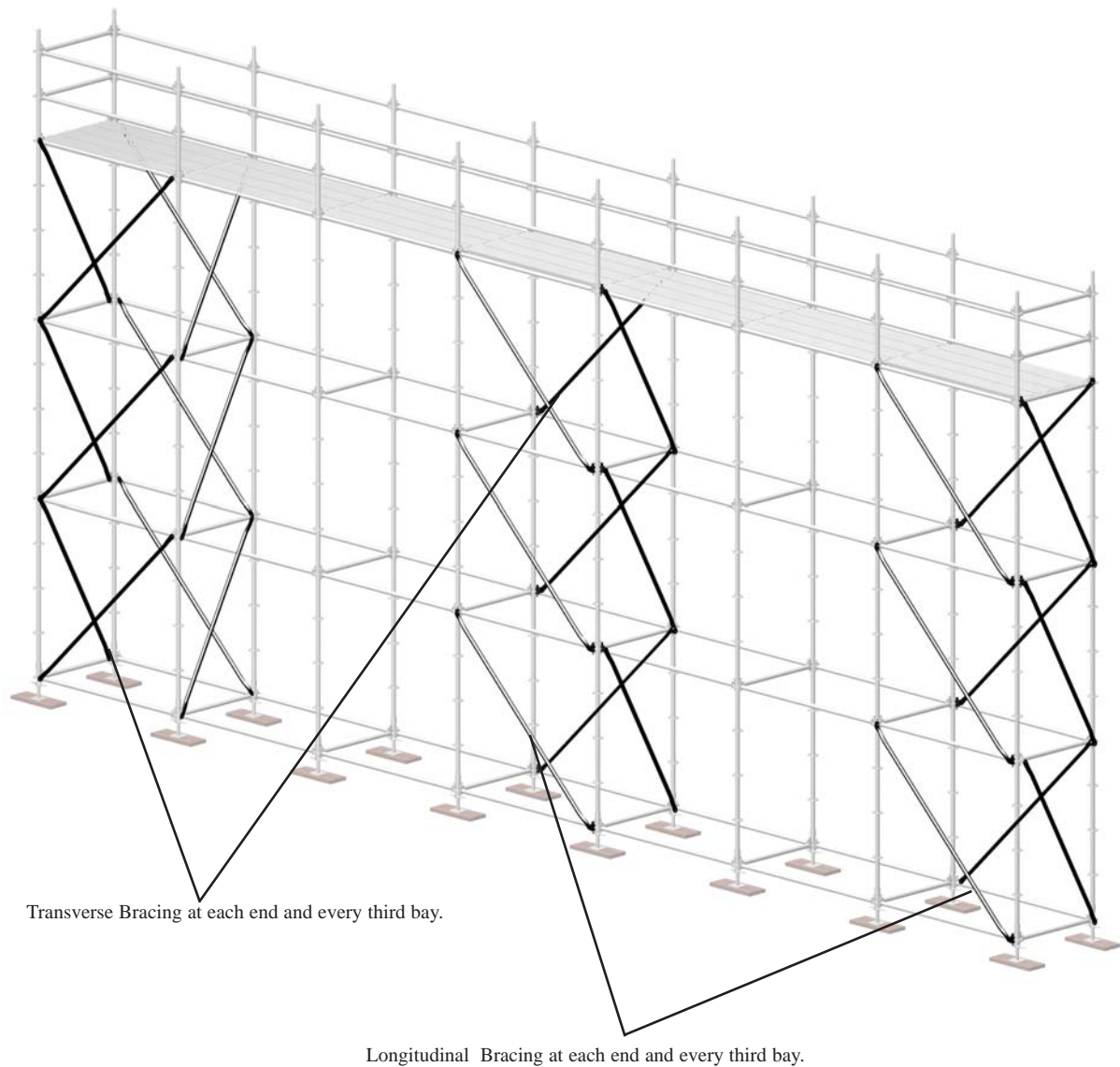


Installation shown meets requirements for use in Ontario (2004). Davit Arm shall be installed and used only in accordance with local regulations and the approved Aluma Systems safe work procedures. For all other jurisdictions consult with Aluma Systems Engineering.



## Sure Lock

### Scaffold Bracing Details



Toeboard omitted for clarity.

## Sure Lock

	ITEM NO.	WEIGHT:	SIZE:
9'-10" (3.0m) SURE LOCK STANDARD	1322/213001	31.5lbs/14.3kg	118.1"/3000mm
6'-7" (2.0m) SURE LOCK STANDARD	1323/213002	21.6lbs/9.8kg	78.7"/2000mm
4'-11" (1.5m) SURE LOCK STANDARD	1336/213095	19.6lbs/8.9kg	59.1"/1500mm
3'-3" (1.0m) SURE LOCK STANDARD	1324/213003	11.7lbs/5.3kg	39.4"/1000mm
1'-7" (0.5m) SURE LOCK STANDARD	1333/213036	6.7lbs/3.0kg	19.7"/500mm

**Use:**

Provides vertical support for scaffolds.

**Observations:**

Standards have rosettes at 19.7" (0.5m) on centre that accept connections at 8 places around the rosette.



	ITEM NO.	WEIGHT:	SIZE:
10' (3.05m) SURE LOCK LEDGERS	1246/13018	24.4lbs/11.1kg	118.1"/3000mm
8' (2.44m) SURE LOCK LEDGERS	1291/13092	19.9lbs/9.0kg	94.1"/2390mm
7' (2.13m) SURE LOCK LEDGERS	1236/13005	17.6lbs/8.0kg	82.1"/2085mm
6' (1.83m) SURE LOCK LEDGERS	1289/13090	15.3lbs/6.9kg	70.1"/1781mm
5'-4" (1.63m) SURE LOCK LEDGERS	1339/213098	13.8lbs/6.3kg	62.1"/1577mm
5'-2" (1.57m) SURE LOCK LEDGERS	1267/13044	13.4lbs/6.1kg	60.1"/1526mm
4' (1.22m) SURE LOCK LEDGERS	1293/13094	10.7lbs/4.9kg	46.1"/1171mm
3'-10" (1.15m) SURE LOCK LEDGERS	1237/13006	10.2lbs/4.6kg	44.1"/1120mm
3'-6" (1.07m) SURE LOCK LEDGERS	1342/213200	9.6lbs/4.4kg	40.1"/1018mm
3' (0.91m) SURE LOCK LEDGERS	1359/213312	8.5lbs/3.9kg	34.1"/866mm
2'-2" (0.65m) SURE LOCK LEDGERS	1238/13007	6.5lbs/3.0kg	24.1"/612mm

**Use:**

Provides horizontal support and supports planks for scaffolds.

Ledgers can also be used as handrails.

**Observations:**

Typically installed at 78.7" (2m) in height in both direction.



## Sure Lock

	ITEM NO.	WEIGHT:	SIZE:
10' (3.05m) SURE LOCK DOUBLE LEDGER	1235/13004	41.1lbs/18.7kg	118.1"/3000m
7' (2.13m) SURE LOCK DOUBLE LEDGER	1260/13037	29.4lbs/13.3kg	82.1"/2085mm

**Use:**

Designed for load of 50 PSF in bays of 2.13m & 3.05m.



	ITEM NO.	WEIGHT:	SIZE:
7' (2.13m) SURE LOCK HD LEDGER	1306/13367	56.9lbs/25.8kg	82.1"/2085mm
5'-2" (1.57m) SURE LOCK HD LEDGER	1305/13365	45.0lbs/20.4kg	60.1"/1526mm

**Use:**

Designed for 3000lb load anywhere on center half of ledger.

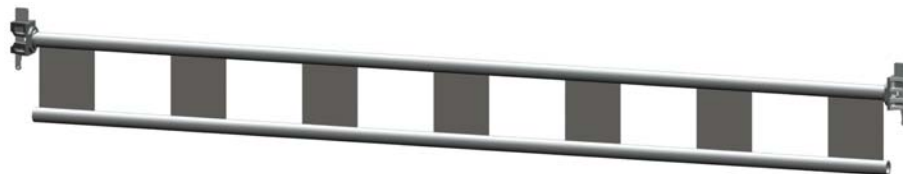


## Sure Lock

	ITEM NO.	WEIGHT:	SIZE:
<b>10' (3.05m) REINFORCED DOUBLE LEDGER</b>	7523/-	60.6lbs/26.7kg	118.2"/3000mm
<b>7' (2.13m) REINFORCED DOUBLE LEDGER</b>	7524/-	42.7lbs/19.0kg	82.1"/2085mm
<b>5'-4" (1.63m) REINFORCED DBL LEDGER</b>	7525/-	32.9lbs/14.9kg	62.1"/1577mm
<b>5'-2" (1.57m) REINFORCED DBL LEDGER</b>	7526/-	32.3lbs/14.6kg	60.1"/1526mm
<b>3'-10" (1.15m) REINFORCED DBL LEDGER</b>	7527/-	24.7lbs/11.4kg	44.1"/1120mm

**Use:**

Allows connection of Beam Rider.






	ITEM NO.	WEIGHT:	SIZE:
<b>10' (3.05m) SURE LOCK BRACE</b>	1243/13015	22.9lbs/10.4kg	142.1"/3610mm
<b>7' (2.13m) SURE LOCK BRACE</b>	1244/13016	19.1lbs/8.7kg	114.0"/2896mm
<b>5'-4" (1.63m) SURE LOCK BRACE</b>	1340/213099	17.3lbs/7.9kg	100.9"/2562mm
<b>5'-2" (1.57m) SURE LOCK BRACE</b>	1268/13045	17.1lbs/7.8kg	99.6"/2530mm
<b>3'-10" (1.15m) SURE LOCK BRACE</b>	1245/13017	15.8lbs/7.2kg	90.8"/2305mm

**Use:**

Locks quickly and securely into position to provide lateral bracing for scaffolding.



# Sure Lock

	<b>2 BOARD INTERMEDIATE SUPPORT LEDGER</b>	<b>ITEM NO.</b> 7711 / -	<b>WEIGHT:</b> 8.1lbs/3.7kg <b>SIZE:</b> 27.4"x2.5"/0.7m x 63.5mm
	<b>Use:</b> A ledger that supports 2 Steel Plank Assemblies whenever there is a need for discontinuity in the scaffold platform.		
	<b>Observations:</b> One end wraps around to Steel Plank Channels while the other clamps to Sure Lock Ledgers.		
	<b>3 BOARD INTERMEDIATE SUPPORT LEDGER</b>	<b>ITEM NO.</b> 7712 / -	<b>WEIGHT:</b> 10.8lbs/4.9kg <b>SIZE:</b> 37" x 2.5"/0.9m x 63.5mm
	<b>Use:</b> A ledger that supports 3 Steel Plank Assemblies whenever there is a need for discontinuity in the scaffold platform.		
	<b>Observations:</b> One end wraps around to Steel Plank Channels while the other clamps to Sure Lock Ledgers.		
	<b>GUARDRAIL STANDARD</b>	<b>ITEM NO.</b> 6973 / -	<b>WEIGHT:</b> 17.6lbs/8.0kg <b>SIZE:</b> 64.6"/ 1.6m
	<b>Use:</b> Use along with Sure Lock Ledgers to form Guardrail near gated section of scaffold.		



Sure Lock



	ITEM NO.	WEIGHT:	SIZE:
24" (0.61m) SURE LOCK SCREWJACK	488/13010	10.0lbs/4.5kg	24"/610mm

**Use:**  
Used to level and increase the height of scaffolds.

**Observations:**  
Allows for 18" adjustment at 4500lb and lesser loads at extension to 24".



	ITEM NO.	WEIGHT:	SIZE:
SWIVEL BASE JACK	489/13011	13.0lbs/5.9kg	27.3"/694mm

**Use:**  
Used where supporting surface is on a slope.

**Observation:**  
Allows 12" adjustment at 4500lb load. 180 degrees rotation in one plane, connect to base to prevent slipping at slopes greater than 15 degrees.



	ITEM NO.	WEIGHT:
ADJUSTABLE JACK WITH 12" CASTOR	4461/13078	44.4lbs/20.1kg

**Use:**  
Allows for vertical adjustment of scaffold and movement to different locations.

**Observations:**  
Has 12" of useable thread.

## Sure Lock

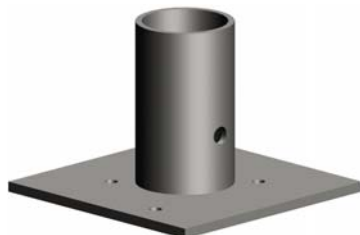


### BASE COLLAR

<b>ITEM NO.</b>	<b>WEIGHT:</b>	<b>SIZE:</b>
1239/13008	4.1lbs/1.9kg	9.2"/234mm

#### Use:

Connects vertical standards to screwjacks and provides base rosette for ledgers and braces.



### BASE PLATE

<b>ITEM NO.</b>	<b>WEIGHT:</b>
1335/213904	3.8lbs/1.7kg
	<b>SIZE:</b> 6"x 6"/ 152mm x 152mm

#### Use:

Alternative non-adjustable base.



### COUPLING PIN

<b>ITEM NO.</b>	<b>WEIGHT:</b>
1411/213901	1.8lbs/0.8kg
	<b>SIZE:</b> 1.6" x 9.3"/40.4mm x 235mm

#### Use:

Attaches to Sure Lock Standards and other Sure Lock accessories so that Sure Lock Standards can be connected on top of each other.

## Sure Lock

	ITEM NO.	WEIGHT:	SIZE:
10' (3.05m) STEEL PLANK	1639/13210	42.3lbs/19.2kg	120.1"/3050mm
7' (2.13m) STEEL PLANK	1644/13270	30.7lbs/13.9kg	83.9"/2130mm
5'-4" (1.63m) STEEL PLANK	1643/13254	24.5lbs/11.1kg	64.0"/1626mm
5'-2" (1.57m) STEEL PLANK	1642/13252	23.7lbs/10.8kg	61.9"/1572mm
3'-10" (1.15m) STEEL PLANK	1641/13231	15.5lbs/7.0kg	45.3"/1150mm
2'-2" (0.65m) STEEL PLANK	1640/13222	12.0lbs/5.5kg	25.6"/650mm

**Use:**

Used as a high strength light weight platform for Sure Lock scaffolding.



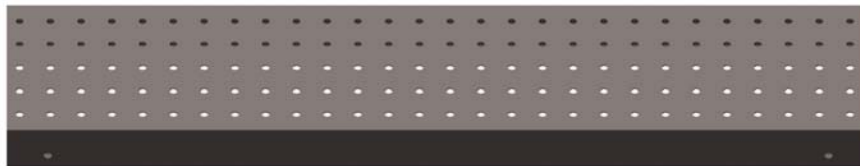
	ITEM NO.	WEIGHT:	SIZE:
10' (3.05m) STEEL PLANK CHANNEL	4175/947506	38.9lbs/17.6kg	116.9"/2969mm
7' (2.13m) STEEL PLANK CHANNEL	4174/947505	27.2lbs/12.3kg	80.7"/2049mm
5'-4" (1.63m) STEEL PLANK CHANNEL	4347/947504	21.0lbs/9.5kg	60.8"/1545mm
5'-2" (1.57m) STEEL PLANK CHANNEL	3958/947503	20.2lbs/9.2kg	58.7"/1491mm
3'-10" (1.15m) STEEL PLANK CHANNEL	3957/947502	20.1lbs/9.1kg	42.1"/1069mm
2'-2" (0.65m) STEEL PLANK CHANNEL	4172/947501	8.6lbs/3.9kg	22.4"/569mm

**Use:**

Roll-form for steel plank assembly.



Plank Cross Section



Sure Lock

SCAFFOLD PLANK WINDLOCK	ITEM NO.	WEIGHT:
	4178/13200	0.1lbs/0.05kg SIZE: 1.2" x 3.8"/30.2mm x 96.8mm



**Use:**  
Part of the Steel Plank Assemblies, locks on to ledgers to prevent unintended uplift of planks.

STEEL HOOK	ITEM NO.	WEIGHT:
	1688/947508	1.6lbs/0.7kg SIZE: 7.1" x 5.1"/0.18m x 0.13m



**Use:**  
Part of the Steel Plank Assemblies, rests on top of the ledgers and supports the Steel Channel on the ledger.

7' MAC DEK 10' MAC DEK	ITEM NO.	WEIGHT:	SIZE:
	1645/14000 1646/14001	29.1lbs/13.2kg 45.0lbs/20.4kg	83.9"/2130mm 120.1"/3050mm



**Use:**  
Platform for Sure Lock scaffold.

**Observations:**  
Aluminum frame with plywood construction.  
Possible alternative to SPII planks.

# Sure Lock

	ITEM NO.	WEIGHT:	SIZE:
ONE BOARD SIDE BRACKET	1294/13111	3.6lbs/1.62kg	11.8"/300mm



**Use:**  
Allows for one additional plank to be placed at the side of the scaffolding.

	ITEM NO.	WEIGHT:	SIZE:
TWO BOARD SIDE BRACKET	1240/13009	14.0lbs/6.4kg	21"/533mm



**Use:**  
Allows for two additional planks to be placed at the side of the scaffolding.




	ITEM NO.	WEIGHT:	SIZE:
THREE BOARD SIDE BRACKET	1295/13113	17lbs/7.7kg	31"/791mm



**Use:**  
Allows for three additional planks to be placed at the side of the scaffolding.



Sure Lock

	<div> <div>41" (1.15m) SIDE BRACKET</div> <div> <div>ITEM NO.</div> <div>1341/213104</div> </div> <div> <div>WEIGHT:</div> <div>24.3lbs/11.0kg</div> </div> <div> <div>SIZE:</div> <div>45.3"/1150mm</div> </div> </div>		
	<div> <div>Use:</div> <div>Plank space allows for four 9.5" planks. Connects to side of scaffolding.</div> </div>		
	<div> <div>TELESCOPING SIDE BRACKET</div> <div> <div>ITEM NO.</div> <div>1296/13115</div> </div> <div> <div>WEIGHT:</div> <div>21.0lbs/9.5kg</div> </div> <div> <div>SIZE:</div> <div>40.4"/1027mm</div> </div> </div>		
	<div> <div>Use:</div> <div>Allows for 24"-36" (558.8mm-914.4mm) of adjustment in length.</div> </div>		
	<div> <div>DAVIT ARM (FALL ARREST)</div> <div> <div>ITEM NO.</div> <div>7591 / -</div> </div> <div> <div>WEIGHT:</div> <div>26.1lbs/11.9kg</div> </div> <div> <div>SIZE:</div> <div>24" x 32"/610mm x 816mm</div> </div> </div>		
	<div> <div>Use:</div> <div>Connects anywhere on the scaffold structure and accepts a retractable lanyard for fall arrest purposes or can be used as a lifting device support.</div> </div> <div> <div>Observations:</div> <div> <div>Max. fall arrest impact load: 750 lbs/340 kg (F.S.2:1)</div> <div>Max. static load capacity: 600 lbs/270 kg (F.S. 3:1)</div> </div> </div>		

Sure Lock



DOUBLE PANEL SWING GATE

ITEM NO.  
6968 / -

WEIGHT: 22.0lbs/10.0kg  
SIZE: 23.0" x 17.8" / 0.58m x 0.45m

**Use:**  
Provides access to scaffold. Prevents workers from falling out of gate ways.

**Observations:**  
Two gates must be installed per entrance



SINGLE PANEL SWING GATE

ITEM NO.  
7661 / -

WEIGHT: 27.2lbs/12.3kg  
SIZE: 23.0" x 33.3"/0.58m x 0.85m

**Use:**  
Provides access to scaffold. Prevents workers from falling out of gate ways.



7' (2.13m) BAY GUARDRAIL FOR GATE

ITEM NO.  
7311/ -

WEIGHT: 22.2lbs/10.1kg  
SIZE: 46.1" X 18.4"/1.2m X 0.5m

**Use:**  
Attaches to regular guardrail standard. Provides fall protection for personnel working on scaffold.

**Observations:**  
Specially sized for optimum swing gate space when using double panel swing gates in 7' (2.13m) bay.

## Sure Lock



DOUBLE PANEL SWING GATE TOEBOARD	ITEM NO.	WEIGHT:
RIGHT	6969 / -	6.3lbs/2.8kg
LEFT	7631 / -	6.3lbs/2.8kg

**Use:**

Attaches to double panel swing gate to reduce risk of falling objects and eliminates tripping hazard from gated area.

**Observations:**

Moves with gate.



SINGLE PANEL SWING GATE TOEBOARD	ITEM NO.	WEIGHT:
	7681 / -	10.0lbs/4.6kg

**Use:**

Attaches to single panel swing gate to eliminate fixed toeboard tripping hazard and reduces the risk of falling objects from gated area.

**Observations:**

Moves with gate.



	ITEM NO.	WEIGHT:	SIZE:
2'-2" (0.65m) STEEL TOEBOARD	6961/-	5.1lbs/2.3kg	121.9in/3097.0mm
2'-10" (0.86m) STEEL TOEBOARD	6962/-	7.1lbs/3.2kg	85.7in/2177.5mm
3'-10" (1.15m) STEEL TOEBOARD	6963/-	9.3lbs/4.2kg	65.9in/1673.5mm
5'-2" (1.57m) STEEL TOEBOARD	6964/-	12.3lbs/5.6kg	63.8in/1619.5mm
5'-4" (1.63m) STEEL TOEBOARD	6965/-	12.5lbs/5.7kg	47.1in/1197.5mm
7'-0" (2.13m) STEEL TOEBOARD	6966/-	16.3lbs/7.4kg	35.9in/911.5mm
10'-0" (3.05m) STEEL TOEBOARD	6967/-	23.4lbs/10.6kg	27.5in/697.5mm

**Use:**

Prevents loose material from falling off the scaffold platform.

**Sure Lock**

---



**SINGLE PANEL SWING GATE EXT.**

**ITEM NO.**  
7733 / -

**WEIGHT:** 4.6lbs/2.1kg  
**SIZE:** 29.9"x8.1"/0.76m x 0.21m

---

**Use:**  
Extends height for single panel swing gate (Item No. 7661) in applications where greater guardrail height is required.



**DOUBLE PANEL SWING GATE EXT.**

**ITEM NO.**  
7734 / -

**WEIGHT:** 2.7lbs/1.2kg  
**SIZE:** 14.4"x8.1"/0.37m x 0.21m

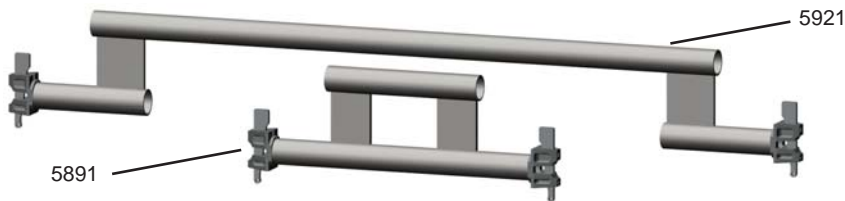
---

**Use:**  
Extends coverage area for double panel swing gate (Item No. 6968) in applications where greater guardrail height is required.

# Sure Lock

	ITEM NO.	WEIGHT:	SIZE:
10' (3.05m) CALIFORNIA GUARDRAIL	1061/13410	29.0lbs/13.2kg	118.2"/3050mm
7' (2.13m) CALIFORNIA GUARDRAIL	3950/13470	22.0lbs/10.0kg	81.9"/2130mm
5'-4" (1.63m) CALIFORNIA GUARDRAIL	3949/13454	18.2lbs/8.3kg	62.1"/1626mm
5'-2" (1.57m) CALIFORNIA GUARDRAIL	5921/13452	17.8lbs/8.1kg	60.0"/1572mm
3'-10" (1.15m) CALIFORNIA GUARDRAIL	3948/13431	14.6lbs/6.7kg	46.4"/1150mm
2'-2" (0.65m) CALIFORNIA GUARDRAIL	5891/13422	11.1lbs/5.1kg	23.7"/650mm

**Use:**  
Top rail member meets special California guardrail height requirements.



	ITEM NO.	WEIGHT:	SIZE:
21' (6.39m) Lattice Girder	1247/13019	158.6lbs/71.1kg	249.8"/6344mm

**Use:**  
When bridging is required over an opening. Lattice Girder will function as a truss.





# Sure Lock

	ITEM NO.	WEIGHT:	SIZE:
3'-10" (1.15m) U-Transom	1255/13032	12.2lbs/5.5kg	45.3"/1150mm
5'-2" (1.30m) U- Transom	1266/13043	15.6lbs/7.1kg	61.9"/1572mm
7'-0" (2.13m) U-Transom	1274/13054	20.1lbs/9.1kg	83.9"/2130mm

**Use:**  
 Adds support for wooden planks



	ITEM NO.	WEIGHT:	SIZE:
7' (2.14m) STAIRWAY STRINGER ASSEMBLY	1298/13215	49.8lbs/22.6kg	112.4"/2854.8mm

**Use:**  
 As a stringer for scaffold stairways.



# Sure Lock

---

<b>30" (0.76m) STAIRWAY TREAD ASSEMBLY</b>	<b>ITEM NO.</b> 1060/13303	<b>WEIGHT:</b> 15lbs/6.8kg <b>SIZE:</b> 33.8" x 9.5"/858mm x 241mm
--	-------------------------------	---

---



**Use:**  
Attaches to stairway stringer as a step for scaffold stairways.

**Observations:**  
Has anti-slip protection.

---

Sure Lock



	ITEM NO.	WEIGHT:	SIZE:
6' (1.83m) STANDARD LADDER ASSEMBLY	1123/311094	19.1lbs/8.7kg	74.5"/1892mm
5' (1.52m) STANDARD LADDER ASSEMBLY	1120/311057	16.1lbs/7.3kg	62.5"/1588mm
3' (0.91m) STANDARD LADDER ASSEMBLY	1122/311064	10.1lbs/4.6kg	38.5"/978mm

**Use:**  
Used to access the different levels of the scaffolding.



	ITEM NO.	WEIGHT:	SIZE:
5' (1.52m) SYSTEM LADDER (2002)	7612/ -	8.0lbs/3.6kg	60"/1500mm
3' (0.91m) SYSTEM LADDER (2002)	7621/ -	5.1lbs/2.3kg	36"/900mm

**Use:**  
Used to access the different levels of the scaffolding. Anti-slip tread design.

## Sure Lock



## UNIVERSAL LADDER BRACKET

<b>ITEM NO.</b>	<b>WEIGHT:</b>	<b>SIZE:</b>
8001/-	9.2lbs/4.2kg	19.1"/486.4mm

**Use:**

Used to secure the ladder at the bottom of the scaffolding.

**Observation:**

**Attachment:**  
Attaches to ladder at 5' intervals. Fits both standard ladder assemblies and system ladders.



## LADDER RESTRAINT BRACKET

<b>ITEM NO.</b>	<b>WEIGHT:</b>
8061/-	4.3lbs/2.0kg

**Use:**

Used to provided additional stability for system ladders attached to the Sure Lock standards with system ladder II (SLII) Brackets.



**SLII LADDER ATTACHMENT BRACKET**  
**RIGHT HAND**  
**LEFT HAND**  
**ZERO OFFSET**

ITEM NO.	WEIGHT:
6970/ -	5.5lbs/2.5kg
6971/ -	5.5lbs/2.5kg
7713/ -	5.2lbs/2.4kg

**Use:**

Used to secure system ladders to the Sure Lock standards.



	ITEM NO.	WEIGHT:	SIZE:
ACCESS LADDER CAGE	6974/ -	40.3 lbs/18.3 kg	0.9m X 0.7m/33.3" X 28.5"
SYSTEM LADDER CAGE	7652/ -	38.6 lbs/17.5 kg	0.9m X 0.7m/33.4" x 28.5"

**Use:**  
Provides continuous fall protection for ladders in Sure Lock scaffolding. Used with standard ladders and system ladders.



	ITEM NO.	WEIGHT:	SIZE:
EXIT SECTION FOR LADDER CAGE	6975/ -	15.6lbs/7.1kg	1.1m X 0.3m/3'-8" X 1'-3"

**Use:**  
Attach to gate sections of scaffolding to provide fall protection while providing maximum access.

# Sure Lock



	ITEM NO.	WEIGHT:	SIZE:
10' (3.05m) BASE FOUNDING LADDER	5952/ -	97.5lbs/44.2kg	124"/3150mm
6' (1.83m) BASE FOUNDING LADDER	5954/ -	62.8lbs/28.5kg	76"/1930mm
3' (0.91m) BASE FOUNDING LADDER	5955/ -	28.7lbs/13.0kg	40"/1016mm

**Use:**  
 In applications in which the supporting surface is at an angle (e.g. tapered boilers), founding ladders are used support and erect the scaffold.



	ITEM NO.	WEIGHT:	SIZE:
10' (3.05m) FOUNDING LADDER	1346/213210	90.2lbs/40.9kg	124"/3150mm
8' (2.44m) FOUNDING LADDER	5953/ -	72.7lbs/33.0kg	100"/2540mm
6' (1.83m) FOUNDING LADDER	1345/213206	55.6lbs/25.2kg	76"/1930mm
4' (1.22m) FOUNDING LADDER	1344/213204	37.5lbs/17.0kg	52"/1321mm

**Use:**  
 In applications in which the supporting surface is at an angle (e.g. tapered boilers), founding ladders are used support and erect the scaffold.

# Sure Lock

	ITEM NO.	WEIGHT:	SIZE:
FOUNDING LADDER BRACE	5958 / -		

**Use:**  
 Provides bracing for founding ladder.



	ITEM NO.	WEIGHT:	SIZE:
11'-6" (3.51m) Scaffolding Starter Beam	5957 / -	247.3lbs/112.2kg	138"/3505mm
7'-0" (2.10m) Scaffolding Starter Beam	5960 / -	94.1lbs/42.7kg	83"/2098mm

**Use:**  
 Use with founding system. Sits in the bottom of boiler & scaffold is built on top of it.



# Sure Lock



## HALF SWIVEL CLAMP

ITEM NO.	WEIGHT:
1586/12017	1.86lbs/0.84kg

Use:  
Used on standard ladder brackets.



## SWIVEL CLAMP

ITEM NO.	WEIGHT:
1579/12008	4.00lbs/1.81kg

Use:  
Clamps two 1.9" dia. tubes at any angle.



## SURE LOCK SWIVEL COUPLER ADAPTER

ITEM NO.	WEIGHT:
1242/13013	3.0lbs/1.4kg

Use:  
Connects tubes to Sure Lock Rosettes.



# Sure Lock

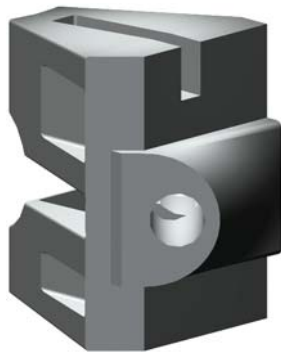


**SURE LOCK RIGHT ANGLE WELDED  
COUPLER ADAPTER**

**ITEM NO.**  
1241/13012

**WEIGHT:**  
3.0lbs/1.4kg

**Use:**  
Connects tubes to Sure Lock Rosettes perpendicular to the standards.



**DIAGONAL BRACE LEDGER HEAD  
RIGHT HAND  
LEFT HAND**

**ITEM NO.**  
1436/213919  
1437/213920

**WEIGHT:**  
1.3lbs/0.6kg  
1.3lbs/0.6kg

**Use:**  
Used to connect diagonal braces to Sure Lock standards.

**Observation:**  
Replacement part.



**SURE LOCK LEDGER HEAD**

**ITEM NO.**  
4344/213906

**WEIGHT:**  
1.1lbs/0.5kg

**Use:**  
Used to connect various Sure Lock components to the Sure Lock standards.

**Observation:**  
Replacement part.

Sure Lock

	<b>ROSETTE</b>	<b>ITEM NO.</b> N4192/213905	<b>WEIGHT:</b> 0.98lbs/0.44kg <b>SIZE:</b> Dia: 4.8"/121.9mm
	<b>Use:</b> Allows Sure Lock components to be connected together.	<b>Observation:</b> Replacement part.	
	<b>WEDGE</b>	<b>ITEM NO.</b> 2281/213903	<b>WEIGHT:</b> 0.28lbs/0.13kg <b>SIZE:</b> 5.5" x 0.25"/140mm x 6.4mm
	<b>Use:</b> Locks ledger heads into rosette.	<b>Observation:</b> Replacement part.	
	<b>WALL HOOK</b>	<b>ITEM NO.</b> - /12209	<b>WEIGHT:</b> 1.4lbs/0.6kg <b>SIZE:</b> 5.9"x2.8"/0.15m x 0.07m
	<b>Use:</b> Allows scaffold to be tied to walls. One end attaches to Sure Lock Ledger Head (Item No. 4344/213906) while the other is connected to a steel clip that is secured to the structure.		

Sure Lock



BEAM RIDER ASSEMBLY

<b>ITEM NO.</b>	<b>WEIGHT:</b> 7.4lbs/3.4kg
7522 / -	<b>SIZE:</b> 17" x 5" / 427mm x 127mm

**Use:**  
Allows scaffold to be erected on top of Heavy Duty Ledgers.



BEAM RIDER ASSEMBLY W/O SPIGOT

<b>ITEM NO.</b>	<b>WEIGHT:</b> 5.8lbs/2.7kg
7521 / -	<b>SIZE:</b> 9.3" x 5" / 237mm x 127mm

**Use:**  
Can be used on heavy duty ledgers to provide intermediate ledger connections.



SYSTEM LADDER ALUMINUM SLEEVE  
(123mm)  
(133mm)




<b>ITEM NO.</b>	<b>WEIGHT:</b>	<b>SIZE:</b>
8170 / -	0.49lbs/0.22kg	4.84"/123
8169 / -	0.51lbs/0.23kg	5.23"/133mm

**Use:**  
Replacement part for original ladder sleeve.

Sure Lock

	<b>WEDGE KEEPER (SYSTEM LADDER CAGE)</b>	<b>ITEM NO.</b> 7651 / -	<b>WEIGHT:</b> 0.2lbs/0.09kg <b>SIZE:</b> 1.3" x 2.3"/32.5mm x 57.4mm
	<b>Use:</b> Connects ladder attachment bracket to the ladder. Secures ladder cages to system ladders.	<b>Observations:</b> Wedge (Item No. 2281/213901) must be inserted into slot to prevent wedge keeper from sliding out.	
	<b>WEDGE KEEPER (LADDER CAGE 0.5 SECTION COUPLING)</b>	<b>ITEM NO.</b> 7811 / -	<b>WEIGHT:</b> 0.15lbs/0.07kg <b>SIZE:</b> 1.3" x 1.8"/32.5mm x 44.5mm
	<b>Use:</b> Connects ladder cagehalf sections together.	<b>Observations:</b> Wedge (Item No. 2281/213901) must be inserted into slot to prevent wedge keeper from sliding out	
	<b>LONG WEDGE RETAINER FOR ACCESS CAGE</b>	<b>ITEM NO.</b> 7812 / -	<b>WEIGHT:</b> 0.3lbs/0.14kg <b>SIZE:</b> 1.3" x 3.6"/32.5mm x 90.5mm
	<b>Use:</b> Secures Ladder Cages (Item No. 6974) to Standard Ladders.	<b>Observation:</b> Wedge (Item No. 2281/213901) must be inserted into slot to prevent wedge keeper from sliding out.	

Sure Lock

	CLEVIS PIN	ITEM NO. 2283/213910	WEIGHT
	Use: Secures Sure Lock spigot to standard.	Observations: Used with Hog Ring (Item No. 4010/11175).	
	HOG RING	ITEM NO. 4010/11175	WEIGHT:
	Use: Prevents Clevis Pin from accidentally sliding out.		
	LOCK PIN	ITEM NO. 4201/13014	WEIGHT: 0.24lbs/0.11kg
	Use: Locks Sure Lock Standards together.		

# Sure Lock

## Index

<b><u>Sure Lock Accessories</u></b>	<b><u>Page</u></b>	<b><u>SAP No.</u></b>	<b><u>Old No.</u></b>
10' (3.05m) California Guardrail	22	1061	13410
11'-6" (3.51m) Scaffolding Starter Beam	29	5957	N/A
123mm Aluminum Sleeve	33	8170	N/A
133mm Aluminum Sleeve	33	8169	N/A
21' (6.39m) Lattice Girder	22	1247	13019
2'-2" (0.65m) California Guardrail	22	5891	13422
30" (0.76m) Stairway Tread Assembly	24	1060	13303
3'-10" (1.15m) U Transom	23	1255	13032
3'-10" (1.15m) California Guardrail	22	3948	13431
5'-2" (1.57m) California Guardrail	22	5921	13452
5'-2" (1.57m) U Transom	23	1266	13043
5'-4" (1.63m) California Guardrail	22	3949	13454
7' (2.13m) U Transom	23	1274	13054
7' (2.13m) California Guardrail	22	3950	13470
7' (2.13m) Stairway Stringer Assembly	23	1298	13215
7'-0" (2.13m) Scaffolding Starter Beam	29	5960	N/A
Beam Rider Assembly with Spigot	33	7522	N/A
Beam Rider Main Body	33	7521	N/A
Clevis Pin	35	2283	213910
Coupling Pin	14	1411	213901
Diagonal Brace Left Head	31	1437	213920
Diagonal Brace Right Head	31	1436	213919
Founding Ladder Brace	29	5958	N/A
Half Swivel Clamp	30	1586	12017
Hog Ring	35	4010	11175
Ledger Head	31	4344	213906
Lock Pin	35	4201	13014
Long Wedge Retainer for Access Cage Details	34	7812	N/A
Rosette	32	N4192	213905
Sure Lock 90 Deg. Welded Coupler Adaptor	31	1241	13012
Sure Lock Scaffolding Swivel Coupler Adapter	30	1242	13013
Swivel Clamp	30	1579	12008
Wall Hook	32	N/A	12209
Wedge	32	2281	213903
Wedge keeper (ladder Cage 0.5 Section Coupling)	35	7811	N/A
Wedge Keeper (System Ladder Cage)	35	7651	N/A
<b><u>Sure Lock Braces</u></b>			
10'-0" (3.05m) Sure Lock Brace	11	1243	13015
3'-10" (1.15m) Sure Lock Brace	11	1245	13017
5'-2" (1.57m) Sure Lock Brace	11	1268	13045
5'-4" (1.63m) Sure Lock Brace	11	1340	213099
7'-0" (2.13m) Sure Lock Brace	11	1244	13016
<b><u>Sure Lock Gates &amp; Toeboards</u></b>			
10'-0" Steel Toeboard Assembly	20	6967	N/A
2'-10" Steel Toeboard Assembly	20	6962	N/A
2'-2" (0.65m) Steel Toeboard Assembly	20	6961	N/A
3'-10" (1.15m) Steel Toeboard Assembly	20	6963	N/A
5'-2" (1.57m) Steel Toeboard Assembly	20	6964	N/A
5'-4" (1.63m) Steel Toeboard Assembly	20	6965	N/A
7' (2.13m) Bay Guardrail for Gate	19	7311	N/A
7'-0" (2.13m) Steel Toeboard Assembly	20	6966	N/A

## Sure Lock

### Index

<b><u>Sure Lock Gates &amp; Toeboards</u></b>	<b><u>Page</u></b>	<b><u>SAP No.</u></b>	<b><u>Old No.</u></b>
Double Panel Swing Gate Assembly	19	6968	N/A
Kick Plate for Single Panel Swing Gate	20	7681	N/A
Kicker Plate - Left	20	7631	N/A
Kicker Plate - Right	20	6969	N/A
Single Panel Swing Gate Assembly	19	7661	N/A
Swing Gate Ext. (California/Quebec) - Double Panel	21	7734	N/A
Swing Gate Ext. (California/Quebec) - Single Panel	21	7733	N/A
 <b><u>Sure Lock Jacks &amp; Base Plates</u></b>			
24" (0.61m) Sure Lock Screwjack	13	488	13010
Adjustable Jack & 12" Dia Castor Assembly	13	4461	13078
Base Collar	14	1239	13008
Base Plate	14	1335	213904
Swivel Screwjack Assembly	13	489	13011
 <b><u>Sure Lock Ladders &amp; Ladder Brackets</u></b>			
10' (3.05m) Base Founding Ladder Assembly	28	5952	N/A
10' (3.05m) Founding Ladder Assembly	28	1346	213210
3' (0.91m) Base Founding Ladder	28	5955	N/A
3' (0.91m) Ladder Assembly	25	1122	311064
3' (0.9m) System Ladder 2002	25	7621	N/A
4' (1.22m) Founding Ladder Assembly	28	1344	213204
5' (1.5m) Standard Ladder Assembly	25	1120	311057
5' (1.5m) System Ladder 2002	25	7612	N/A
6' (1.83m) Base Founding Ladder	28	5954	N/A
6' (1.83m) Founding Ladder Assembly	28	1345	213206
6' (1.83m) Standard Ladder Assembly	25	1123	311094
8' (2.44m) Founding Ladder	28	5953	N/A
Access Ladder Cage Assembly	27	6974	N/A
Exit Section for Ladder Cage	27	6975	N/A
Ladder Restraint Bracket Assembly	26	8061	N/A
Left Hand System Ladder Attachment Bracket	26	6971	N/A
Davit Arm (Fall Arrest)	18	7591	N/A
Right Hand System ladder Attachment Bracket	26	6970	N/A
System Ladder Attachment Bracket (Zero Offset)	26	7713	N/A
System Ladder Cage	27	7652	N/A
Tube & Clamp Ladder Universal Bracket	26	8001	N/A
 <b><u>Sure Lock Ledgers</u></b>			
10' (3.05m) Reinforced Double Ledger	11	7523	N/A
10' (3.05m) Sure Lock Double Ledger	10	1235	13004
10' (3.05m) Sure Lock Ledger	9	1246	13018
2'-2" (0.65m) Sure Lock Ledger	9	1238	13007
3' (0.91m) Sure Lock Ledger	9	1359	213312
3'-10" (1.15m) Reinforced Double Ledger	11	7527	N/A
3'-10" (1.15m) Sure Lock Ledger	9	1237	13006
3'-6" (1.07m) Sure Lock Ledger	9	1342	213200
4' (1.22m) Sure Lock Ledger	9	1293	13094
5'-2" (1.57m) Reinforced Double Ledger	11	7526	N/A
5'-2" (1.57m) Sure Lock HD Ledger	10	1305	13365
5'-2" (1.57m) Sure Lock Ledger	9	1267	13044
5'-4" (1.63m) Reinforced Double Ledger	11	7525	N/A
5'-4" (1.63m) Sure Lock Ledger	9	1339	213098

## Sure Lock

---

### Index

#### Sure Lock Ledgers

	<u>Page</u>	<u>SAP No.</u>	<u>Old No.</u>
6' (1.83m) Sure Lock Ledger	9	1289	13090
7' (2.13m) Reinforced Double Ledger	11	7524	N/A
7' (2.13m) Sure Lock Double Ledger	10	1260	13037
7' (2.13m) Sure Lock HD ledger	10	1306	13367
7' (2.13m) Sure Lock Ledger	9	1236	13005
8' (2.44m) Sure Lock Ledger	9	1291	13092
Three Board Intermediate Support Ledger	12	7712	N/A
Two Board Intermediate Support Ledger	12	7711	N/A

#### Sure Lock Planks

10' (3.05m) Steel Plank Assembly	15	1639	13210
10' (3.05m) Steel Plank Channel	15	4175	947506
10' (3.05m) Wooden Plank	16	1646	14001
2'-2" (0.65m) Steel Plank Assembly	15	1640	13222
2'-2" (0.65m) Steel Plank Channel	15	4172	947501
3'-10" (1.15m) Steel Plank Assembly	15	1641	13231
3'-10" (1.15m) Steel Plank Channel	15	3957	947502
5'-2" (1.57m) Steel Plank Assembly	15	1642	13252
5'-2" (1.57m) Steel Plank Channel	15	3958	947503
5'-4" (1.63m) Steel Plank Assembly	15	1643	13254
5'-4" (1.63m) Steel Plank Channel	15	4347	947504
7' (2.13m) Steel Plank Assembly	15	1644	13270
7' (2.13m) Steel Plank Channel	15	4174	947505
7' (2.13m) Wooden Plank	16	1645	14000
Scaffold Plank Windlock	16	4178	13200
Steel Hook	16	1688	947508

#### Sure Lock Standard

1'-7" (0.5m) Sure Lock Standard	9	1333	213036
3'-3" (1.0m) Sure Lock Standard	9	1324	213003
4'-11" (1.5m) Sure Lock Standard	9	1336	213095
6'-7" (2.0m) Sure Lock Standard	9	1323	213002
9'-10" (3.0m) Sure Lock Standard	9	1322	213001
Guardrail Standard	12	6973	N/A





**Brand Services Inc.**

15450 S. Outer Highway 40, #270  
Chesterfield, Missouri  
USA 63017

T 636.519.1000  
F 636.519.1505

[www.Aluma.com](http://www.Aluma.com)

**Aluma Systems  
Industrial Scaffolding**

1258-73rd Avenue SE  
Calgary, Alberta  
Canada T2H 2V5

T 403.259.2600  
F 403.255.9649

**Aluma Systems  
Concrete Construction**

55 Costa Road  
Toronto, Ontario  
Canada L4K 1M8

T 905.669.5282  
F 905.660.8045