

# **BRAND** | **NET**™

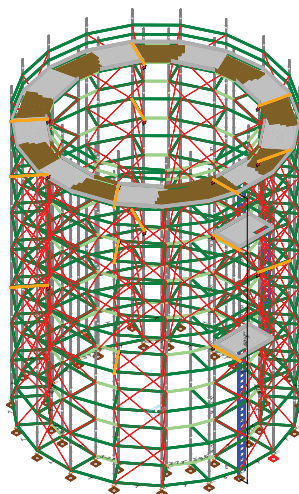
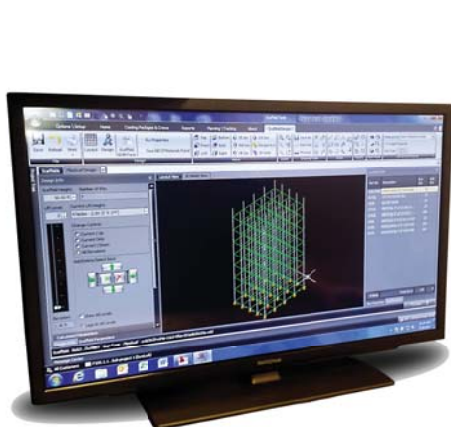
• Scaffold Design • Estimating • Planning

Brand Energy & Infrastructure Services' unmatched experience, expertise and extensive portfolio of service offerings make it the leading provider of specialty services to the global energy, industrial and infrastructure markets. As a natural extension to our diverse service capabilities, our Brand|Net offers Design, Estimating, and Planning services related to industrial access needs. We proactively support, manage and maintain our clients' access needs from the front-end engineering and design all the way through project execution.

# BRAND|NET

• Scaffold Design • Estimating • Planning

## Industry Leading Program for Access Optimization



**Brand|Net**, our proprietary software application, utilizes Brand's 50 years of experience in access services, plus our expertise in industry best practices, including: optimization programs, materials management, engineered systems, engineered projects, project management and project controls to develop and optimize any access program. Brand|Net also employs the latest materials technology to ensure our clients receive the most innovative solutions. Brand|Net's core service offerings include:

- Design optimization, improving safety, reducing scaffold costs
- Overall FEED stage support, developing better baselines, access management process; reduce total number of scaffolds and modifications to reduce labor and rental costs
- Project Execution, visual work packages, aligned project management and project control approaches
- BIM integration, support

Deep program capabilities covering key access management functions including:

- Design 2D / 3D
- Estimating
- Planning / Scheduling
- Materials Management
- Geolocation support
- Customized Reporting

Brand|Net utilizes a dedicated programming team to facilitate its use across the globe. It is fully customizable to meet our client and project needs in all industries we serve where access is required.



Using **Brand|Net** to develop an optimized access approach, clients will see a return on their investment through multiple opportunities, including:

- Improved project baseline
- Improved scaffold designs for safety, re-usability and reduced modifications
- Improved materials management
- Visual work packages for field execution

#### Ease of Use

Brand|Net's simplified workflow allows for our project personnel to quickly and easily integrate the program into their project.

#### Access Design

- Design using industry leading system scaffolds, scaleable
- Standard system configurations as well as custom configurations for the most complex design requirements using the Brand|Net FLEX module
- CAD driven engine provides 2D, and 3D views to facilitate any design need

**Estimating** support using Brand's experience and capabilities to develop customized estimates or industry standard approaches.

- Fully customizable estimating module for labor, crews, equipment and other costs for the scaffold or project
- Utilize Brand's 50 years of experience and productivity culture to develop general or contract aligned estimates or budgets
- Estimate outputs including hours, costs, and scaffold equipment data to facilitate the overarching project management or project control process

#### Materials Management

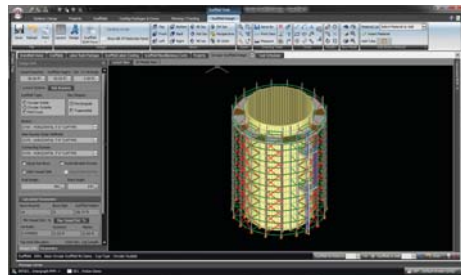
- Per scaffold or per project materials management
- Piece counts, weights by part number allowing for time-phased materials management and forecasting
- Optimize inventory quantities

#### Project life-cycle

Using a fully integrated approach to support our clients in all phases of their project or program including:

- Pre-FEED, conceptual support
- FEED stage to support scope development and better project baselines
- Planning and scheduling support including resource management and master schedule integration via seamless exports to industry leading planning and scheduling software
- Integrate with leading BIM tools such as Smartplant® and Navisworks® for visual (drawings) as well as data and metadata for integrated reviews
- Execution support using Brand|Net's visual and data outputs to validate scopes of work from plan enhancing project management and control
- Visual work packages for improved productivity of access crews

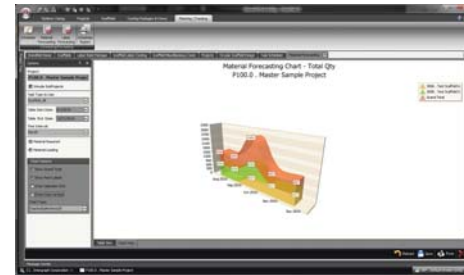
#### DESIGN



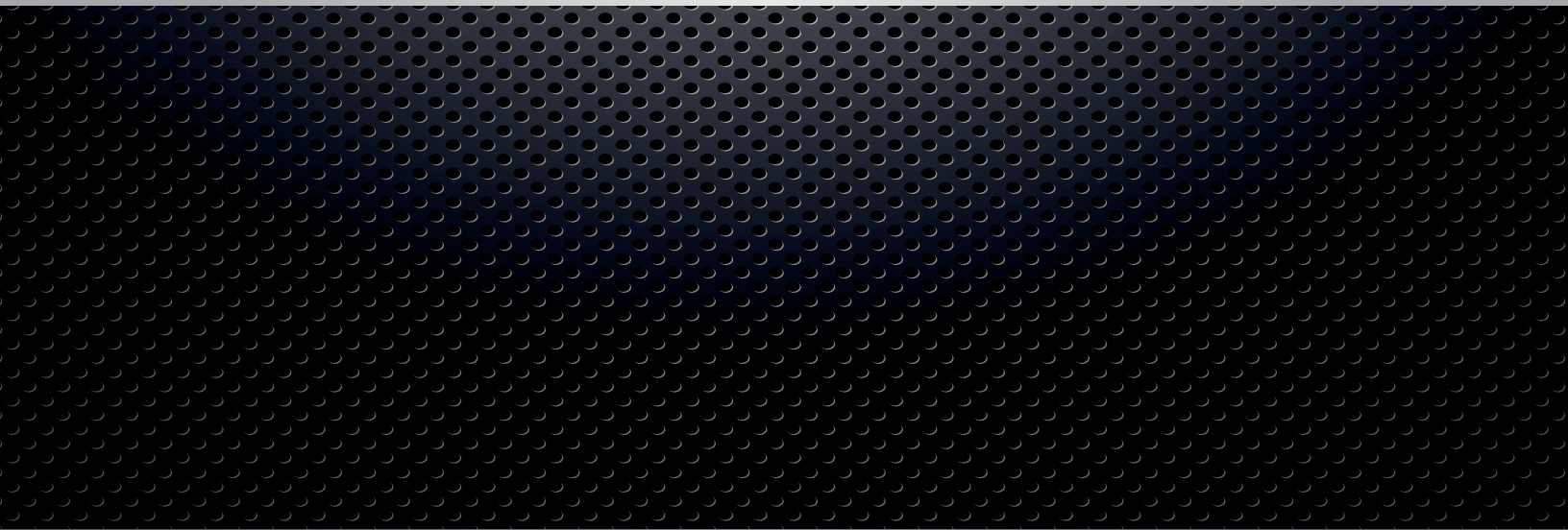
#### ESTIMATING / PLANNING / SCHEDULING



#### EQUIPMENT MANAGEMENT







**For more information:**

**Brand|Net  
Technical Services**

1830 Jasmine Dr.  
Pasadena, MO  
USA 77503

T 281.404.5154  
info@beis.com

**Brand|Net  
US Industrial Engineering**

2233 Cassens Dr.  
Fenton, MO  
USA 63026

T 636.461.2905  
F 636.203.9194